



Overview of LIFE IP CleanEST dams

Annabel Runnel

Estonian Environment Agency

26.10.2023

Environment Agency's (KAUR) activities in CleanEST



- Migration barriers
- Restoration of spawning areas
- Monitoring
- Assessing effectiveness of fish passes (previously built and built during the project)
- Assessing ecosystem services



Beaver in fish camera

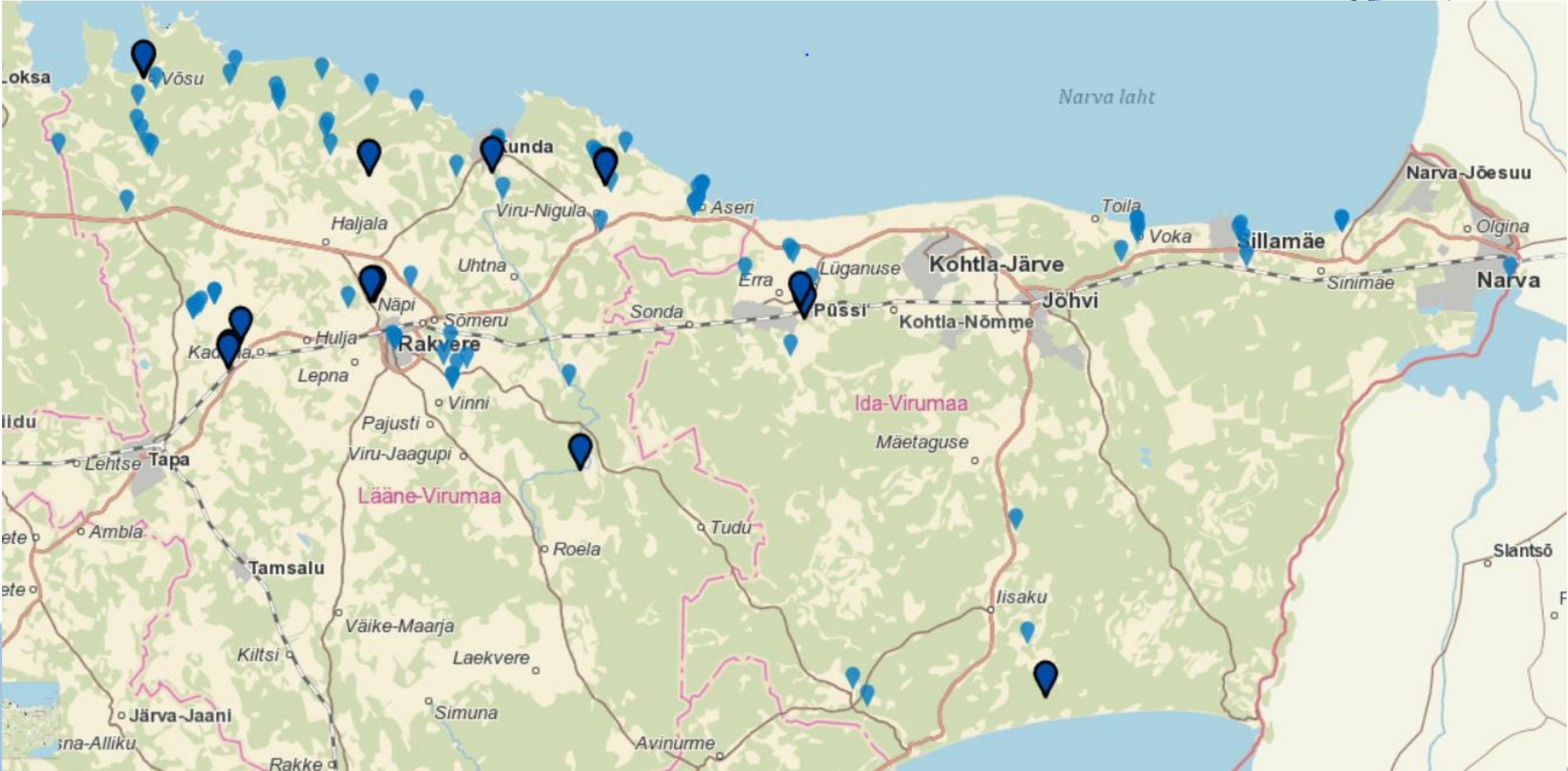
C.11 opening migration barriers and ensuring river connectivity



- Solutions for ≥ 6 migration barriers by the end of 2025
- Inspection of Viru sub-basin objects (93 objects, 29 rivers): priority list of 14 objects
- Selection of objects based on different factors (fish population potential, technical feasibility, cost etc)
- **Püssi dam:** close-to-nature rapid fish pass

- 4 dams demolished from preliminary list (without detailed work projects, only technical assessments or similar)
- 3+Püssi ongoing (preliminary projects made, demolition in next years)

Dam inventory in Viru sub-basin





Purtse river system

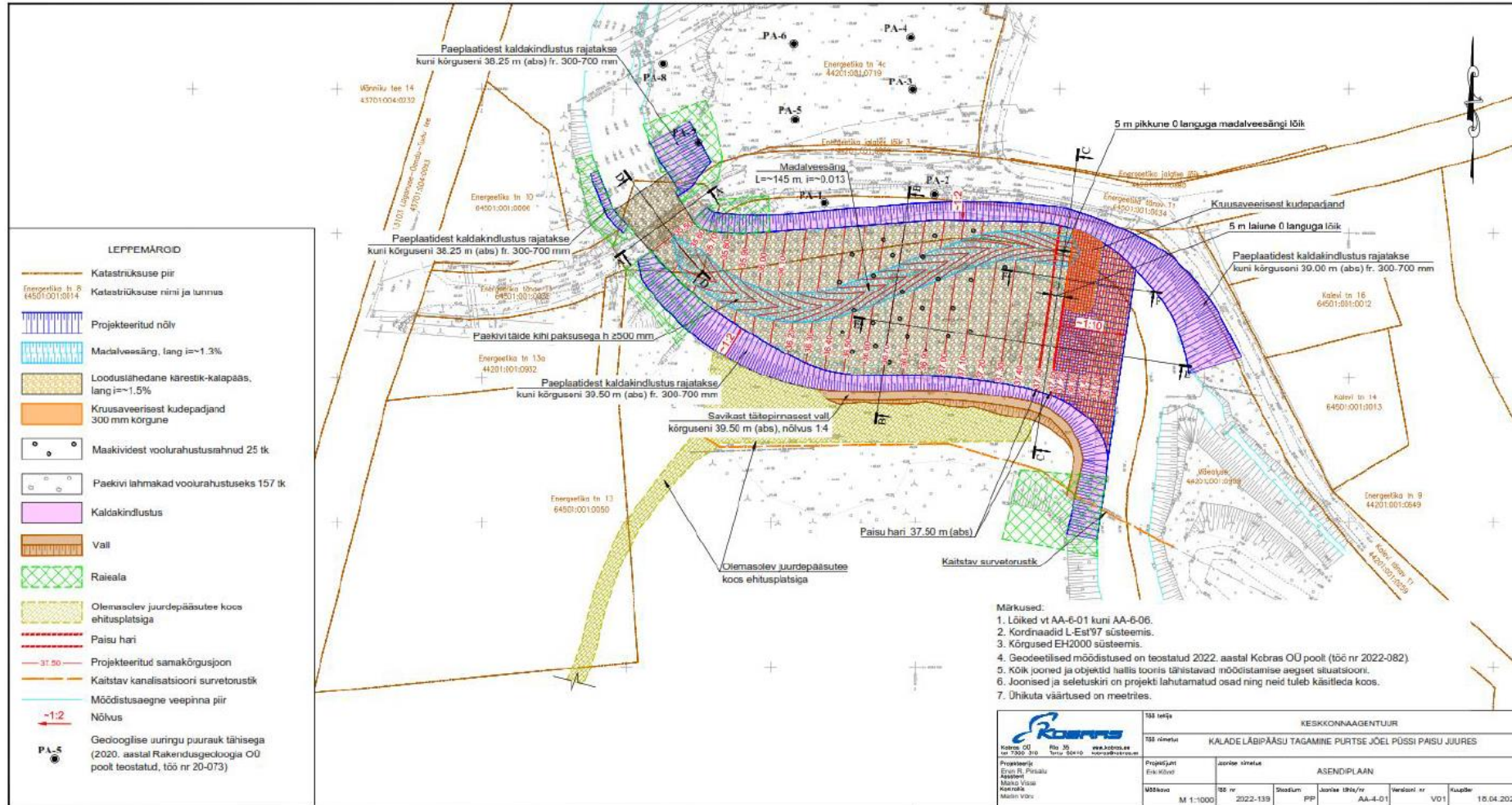
- One of the most rapids-rich rivers in Estonia, historically 2nd best salmon river
- Synergy of different activities: significant effect
- Removal of residual pollution from tributaries: Kohtla, Erra
- Removal of Püssi dam
- Removal of smaller obstacles, habitat restoration



Purtse River: Püssi dam

- 11,6 km from sea
- Cooling water and firewater for producing plywood (Repo Vabrikud AS)
- Work project, EIA
- Repairing the bridge, where the dam locates

Purtse river: Püssi dam, close-to-nature rapid fish pass



Joonis 3. Karestik-kalanäsu asendiplaan. Kalade läbipääsu tagamine Purtse jõel Püssi paisu juures (Kobras OÜ töö nr 2022-139).



Püssi pais

Püssi paisjärv

PÜSSI

Purtse jõgi

Irviälä

Võsu river: Metsa and Mere



- Significant value as a spawning area for sea trout and river lamprey
- Dams serve no purpose, height 60 cm
- Long negotiations with owner (+10 years ago)
- Construction is challenging
- Removal in 2024/25



Former hydro power plant





Alajõgi River: Tamme Dam, 2023

cleanest 







ENNE



PÄRAS

Purtse River



Spring 2020



Autumn 2020

Pada River



Purtse River

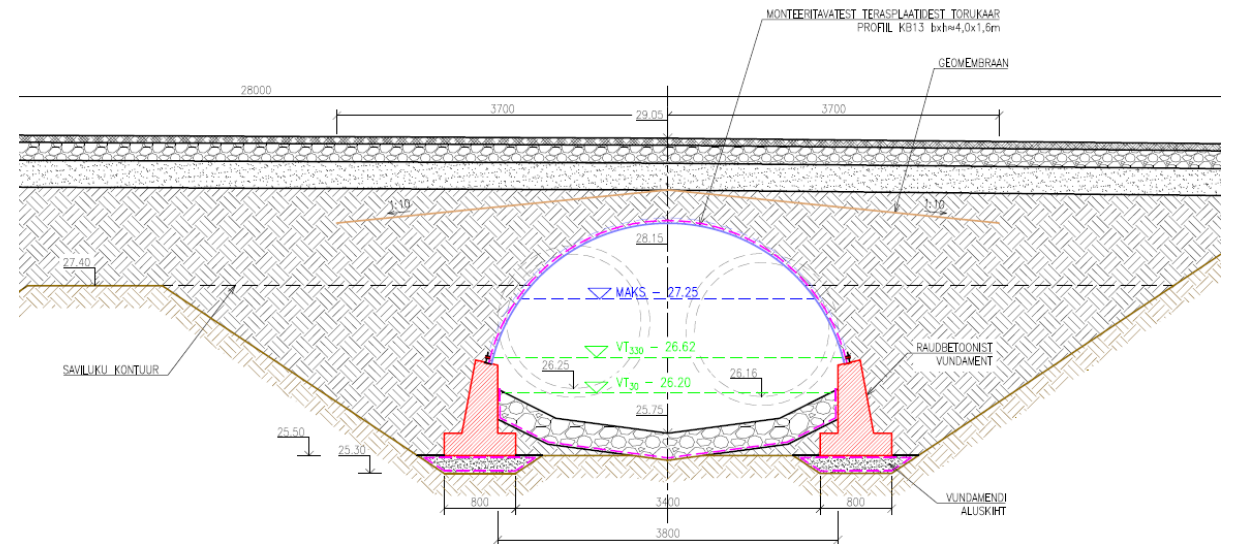
Unukse-Mahu culvert replacement (exp.2025)



- Cooperation with Transport Administration
- At present diameter 1,5 m – after width 3,8 m
- Natural riverbed: enriching river as a habitat



EKTEERITUD TRUUBI RISTL





Virumaa veed puhtaks!

Let's clean the waters of Virumaa!