



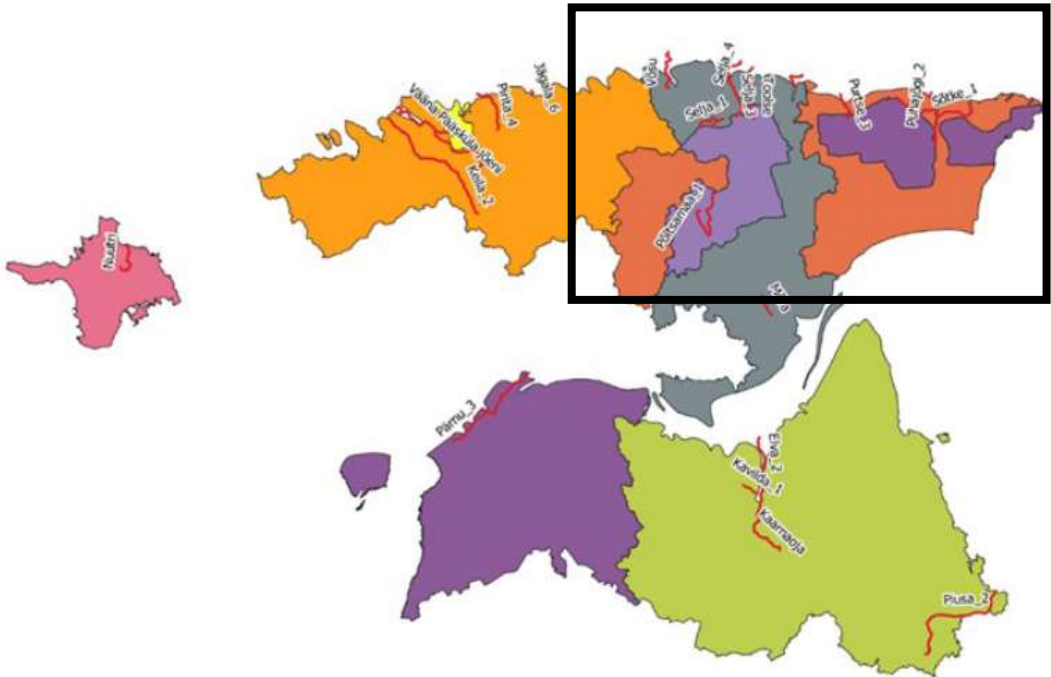
Monitoring networks for groundwater
bodies to assess groundwater and
surface water interaction.
Discussion

Discussion panel

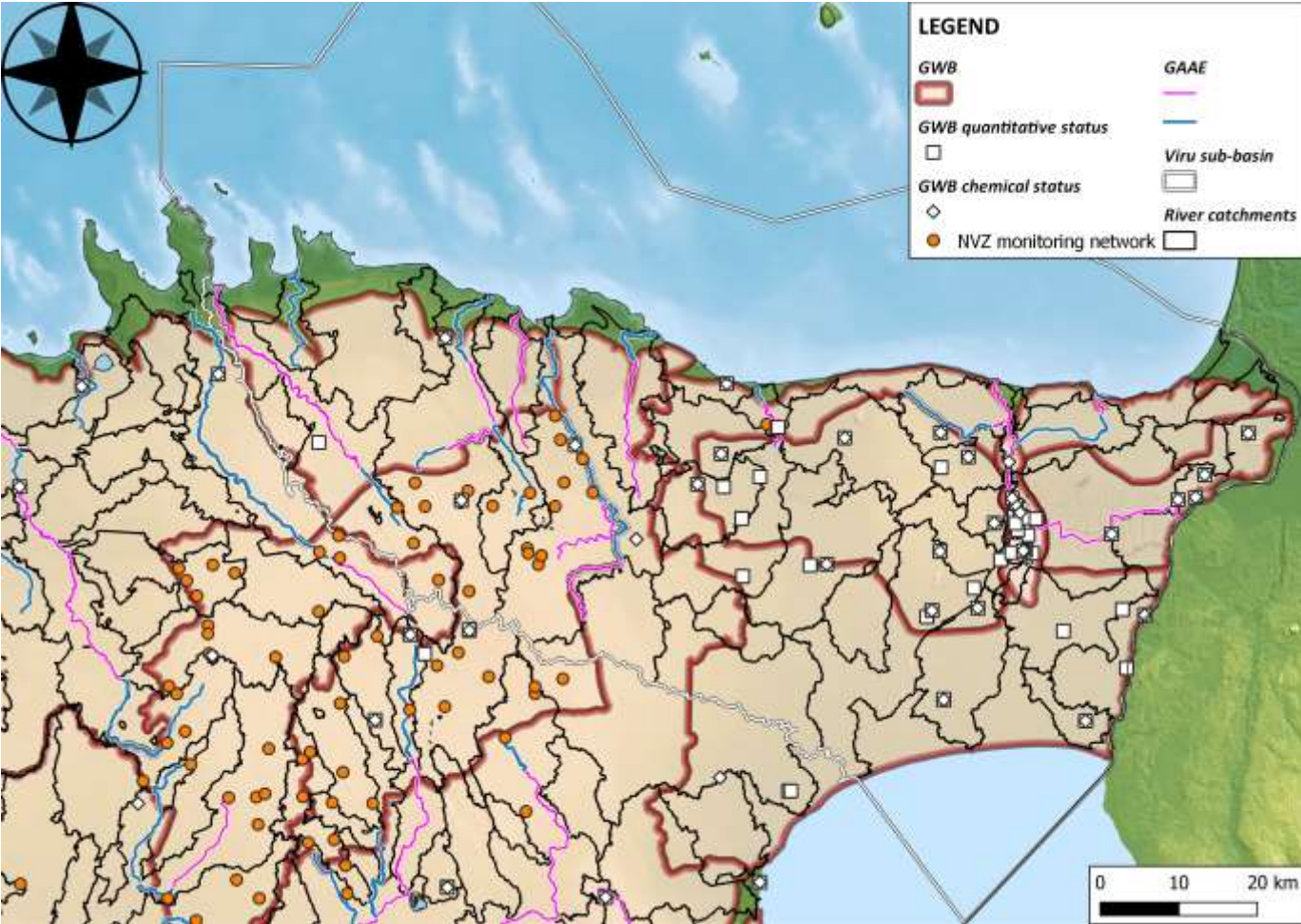


1. Co-ordination of different national monitoring networks (e.g. groundwater, surface water, soil etc);
2. Modification of existing groundwater monitoring networks for more reliable groundwater body status assessments in terms of groundwater-surface water interactions;
3. Establishment of similar monitored parameters and threshold values for groundwater- and groundwater dependent surface water bodies

Theme no. 1. *Co-ordination of different national monitoring networks (e.g. groundwater, surface water, soil etc)*



SWBs in less than good status and the related GWBs (GSE, 2020)





Theme no. 2. *Modification of existing groundwater monitoring networks for more reliable groundwater body status assessments in terms of groundwater-surface water interactions*

Theme no. 3. Establishment of similar monitored parameters and threshold values for groundwater- and GW dependent surface water bodies



Parameter	SWB (ecological status) *	GWB (chemical status)**
N _{total}	3 mg-N/L	-
P _{total}	0,08 mg-P/L	-
NO ₃ -N	-	50 mg/L ~ 11,3 mg-N/L
NH ₄ -N	0,45 mg-N/L	0,5 mg/L ~ 0,4 mg-N/L (aerobic); 1,5 mg/L ~ 1,1 mg-N/L (anaerobic)
SO ₄ ²⁻	-	100 mg/L
Ba	115 µg/L	50 µg/L / 7000 µg/L
Hg	0,07 µg/L	0,4 / 2 µg/L
Phenols	7,7 µg/L	1 µg/L
Petroleum products	100 µg/L	20 µg/L
PAH	-	0,1 µg/L
Benzene	10 / 50 µg/L	1 µg/L

*For SWB good status threshold (rivers); **GWB quality standards and threshold values for